



CHILD DEVELOPMENT GROUP



Annual Newsletter 2025

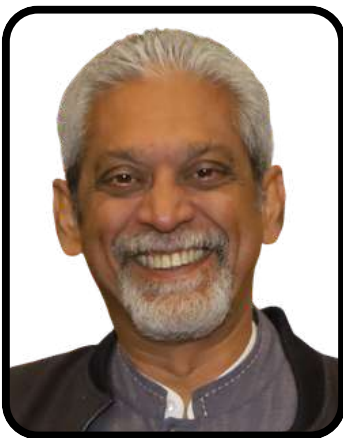


*Children are the world's most valuable resource and its
best hope for the future.*

— John F. Kennedy

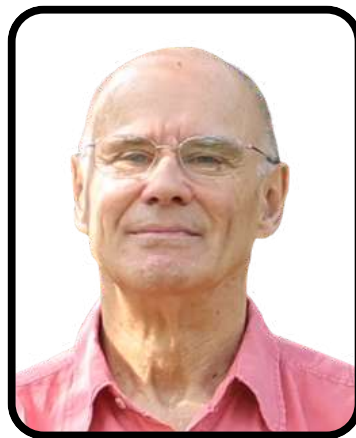
Mentors Who Inspire Us

Sincere and profound gratitude is extended to Vikram Patel, Jonathan Green, and Richard Velleman for their invaluable guidance and mentorship throughout the work of the CDG. Their scholarly wisdom, thoughtful counsel, and steadfast support have been central to shaping CDG's vision and strengthening the quality, depth, and rigour of its work. Their generosity in sharing time, insight, and experience, along with their consistent encouragement, has guided CDG at every stage of its growth and evolution. This contribution has been instrumental not only in advancing our strategic direction but also in nurturing the values and commitment that underpin our work. We remain deeply appreciative of their enduring support and mentorship.



Vikram Patel

Professor, Dept. of Global Health and Population, Harvard TH Chan School of Public Health, USA
Co-Founder and Member of Managing Committee, Sangath



Jonathan Green

Professor of Child and Adolescent Psychiatry
University of Manchester, UK



Richard Velleman

Professor, Dept. of Psychology
University of Bath, UK
Co-Director, Addiction and Related Group, Sangath

Reflections from Senior Leadership



Personally, 2025 has been an important year for the CDG since we have been able to support a record number of young researchers to progress their academic careers. We have had four individuals progressing their PhD journeys within two projects: COINCIDE and NAMASTE. While a new awarded project STEER will support a fifth. This is a remarkable achievement given that so many ambitious early career researchers leave us to further their academic ambitions nationally or internationally. This ability for the CDG to support in-house career growth, will I hope, strengthen the next tier of leaders who will grow Sangath as an organisation. I look forward to how we can support and nurture this newly emerging talent in the coming years.



Gauri Divan
Director, CDG



R. Roy
Implementation
Scientist

In the year 2025, the CDG has made notable achievements in funding success and academics thus ensuring continuity of its vision. Within our programs we have continued to provide interventions to children across diverse communities and in the process advanced our understanding on what needs to be done further. Notwithstanding these gains several challenges presented themselves in the past year, ranging from global funding policy realignments to rapid adaptation of our programs to ensure that the work we do doesn't pause.

For 2026, we will need to reinvent ourselves and I see three specific areas of focused efforts for the group, one, leverage digital innovations, two, develop sustainable program models in collaboration with the public health and care system and three diversify revenue mechanisms. I am certain, that, with the collective team knowledge and purpose we will succeed in our endeavours.

Reflections from Senior Leadership



The CDG has exhibited significant growth in the last year. Our ability to obtain funding to sustain our core areas of work is a reflection and recognition of the high-quality work being done on the ground by the entire team. In parallel, we have been able to diversify our work to include research on relatively neglected topics such as the influence of fathers' involvement on child development and mental health. We have seen team capacity being built in the form of their attendance of international conferences, often through the support of competitive travel awards, and leading on peer-reviewed publications. Finally, the fact that our pool of PhD students in the CDG has grown is a reflection of our commitment to building the next cadre of leaders in early child development. I look forward to another productive and fun year ahead!



Supriya Bhavnani
Research Scientist



Sweta Pal
Public Engagement
Specialist

Over the past year, our work with families of young children with developmental delays across Goa and Delhi has both widened and deepened in meaningful ways. It has been deeply rewarding to witness the real-world impact of the care and support that the NAMASTE and CDG projects are offering in these communities. At the same time, this year has been a powerful reminder that none of this work is possible without the enthusiastic adoption of these tools and approaches by frontline providers. Their commitment and openness to integrating these practices into everyday care has been central to everything we have been able to achieve. I feel especially fortunate to receive mentorship and support from my senior colleagues at CDG, who consistently challenge and guide me with generosity, and patience. Their willingness to share time, insight, and encouragement is something I deeply value and something I hope to extend in equal measure to my peers and to younger colleagues as they grow in their own careers.

Through My Eyes

By Somil Rastogi, In his role as a parent



The world to me is loud and bright,
A storm of colour, sound, and light.
I cover my ears, I turn away,
Too many words, I cannot say.

I flap, I spin, I love my space,
Unseen rhythms I embrace.
I want to speak, laugh and play,
But my mind sways a different way.



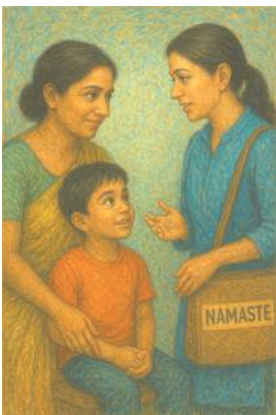
A spring of thoughts, won't stay still,
They twist and turn beyond my will.
I try to rest, to find some peace,
But storm inside may never ease.

I always wonder what others feel,
Beneath their smiles, what's truly real.
My own emotions I struggle to reveal,
Others just mock, unaware how I feel.



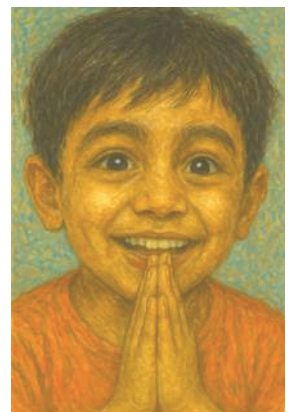
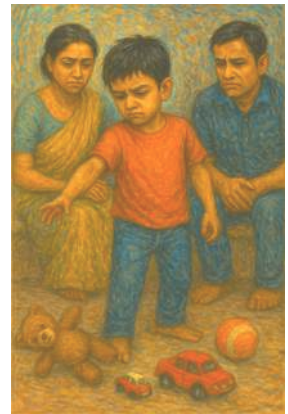
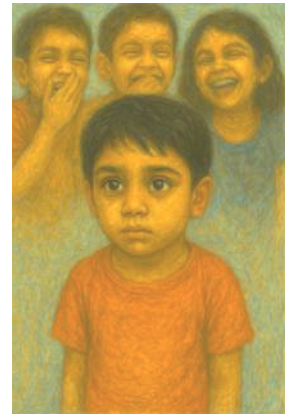
I may look lost but I see and feel,
My love is real, having great zeal.
This rushing world is hard to bear,
I just need your love and care.

I turned messy when anger is strong,
Can't be consoled and all feels wrong.
Parent's eyes then get filled with despair,
Yet deep in their hearts, they still care.



Then comes NAMASTE, gentle and wise,
It saw the world **through my eyes**.
Shows the parents, how to understand,
Gives them strength with guiding hand.

Thank you NAMASTE, shining so bright,
With gentle strength and steady light.
You helped me grow, helped me see,
A promising path ahead of me...!



Funder: Medical Research Council



COLLABORATORS:

All India Institute of Medical Sciences, Delhi
Maulana Azad Medical College, Delhi
University of Manchester, UK



COMPASS Group Photo

COMPASS Longitudinal Follow-up

COMmunication-centred Parent-mediated Treatment for Autism Spectrum disorder in South asia a Longitudinal Follow-up Study (2025-2027)

The COMPASS trial was the largest randomized controlled trial of a parent-mediated autism intervention (PASS Plus) delivered by non-specialists in the Global South, evaluating both its effectiveness and cost-effectiveness. Building on this work, COMPASS LF programme commenced in July 2025 to assess the long-term impact of PASS Plus as children grow older, including whether early benefits are sustained over time. The study examines longitudinal changes in children's communication and daily functioning, alongside family well-being and patterns of service use. Together, these data will generate robust evidence to inform policy decisions and support the scale-up of community-based autism care across South Asia.

KEY FEATURES

- The programme follows the original COMPASS cohort (261 children and families) to assess long-term outcomes of the PASS Plus intervention.
- COMPASS LF evaluates whether early childhood gains are maintained, reduced, or transformed over time, focusing on developmental trajectories.
- It integrates developmental, family, and service-level data to produce evidence that informs health and social care policy and long-term investment decisions.
- Outcome measures (including BOSCC and DCMA) are coded locally by the Sangath team, supporting sustainable, feasible, and scalable assessment.



Interaction with participants at the center during the assessment

FUNDER: The science for Africa Foundation
through the Being Initiative



COLLABORATORS:

Indian Institute of Technology, Bombay

Krea University, Andhra Pradesh

Sapien Labs, Virginia, USA

Institute for Financial Management and Research, Tamil Nadu

Keele University, Staffordshire, UK

Caring From Distance- Centre for Research and Community Development Goa



STEER team at the Rewari office

STEER

Stressor for Anxiety and Depression (2025-2028)

The STEER, research program based in Rewari, Haryana, follows a cohort of Mothers and Adolescents over time. The study examines how early-life stressors, including childhood trauma, exposure to violence and conflict, and media influences, affect the development of anxiety and depression. It also examines the role of early cognitive and social development, alongside exploring community understandings of mental health and resilience. Implemented with diverse partners, STEER combines rigorous research with strong community and stakeholder engagement, while building research capacity within the team. A parallel study in Vietnam enables cross-country learning and comparison.

KEY FEATURES

- STEER actively engages stakeholders, community members, and lived-experience panels to ensure research questions, methods, and interpretations reflect real-world needs and local priorities.
- The programme emphasises capacity building for researchers and field teams in ethics, data quality, analysis, and community engagement within longitudinal research.
- A parallel study in Vietnam supports cross-country comparison and shared learning, deepening understanding of how social and cultural contexts influence youth mental health and resilience.
- STEER brings together diverse research and implementation partners, integrating expertise and contextual insights to strengthen study design and achieve shared objectives.

FUNDER- Team Science Grant (2021) India Alliance/DBT Wellcome Trust

IndiaAlliance
DBT wellcome

COLLABORATORS:

Public Health Foundation of India, Delhi
Indian Institute of Public Health, Bangalore
Institute of Public Health Bengaluru
St. John Research Institute, Bangalore
Ashoka University, Sonipat



COINCIDE team celebrating completion of data collection

COINCIDE

Nutritional, psychosocial and environmental determinants of neurodevelopment and child mental health (2021-2026)

COINCIDE study aims to investigate the independent, interaction, and cumulative effects of nutritional, psychosocial, and environmental factors on children's cognitive development and mental health in urban and rural India. It also seeks to explain pathways leading to inequities in child outcomes at the individual, household, and neighbourhood levels.



COINCIDE team member engaging with a family during assessment

KEY FEATURES

- The COINCIDE Sangath team successfully completed data collection across all three domains-nutrition, psychosocial factors, and environmental pollutants-along with child outcome assessments in 1,150 households.
- The COINCIDE study seeks to elucidate pathways contributing to inequalities in child outcomes through the development of a comprehensive Theory of Change (ToC).
- The PhD sub-study focuses on examining paternal involvement and its influence on child development and mental health among rural households in Rewari, Haryana.
- Members of the COINCIDE Sangath team effectively liaised with local and state-level government stakeholders through multiple meetings and workshops.

FUNDER: NIHR-UK aid



COLLABORATORS:

University of Manchester UK
AutismCare Nepal Society, Nepal
Sri Lanka Society of Paediatrics, Sri Lanka
Harvard Medical School, USA
World Health Organization
Ummeed – Child Development Center, Maharashtra
King's College London, UK; La Trobe University, Australia; Autism Speaks, USA
Department of Women and Child Development, Delhi and Goa
Directorate of Health Services, Goa



NAMASTE Cross-Country Team Meeting, Goa

NAMASTE

Neurodevelopment and Autism in South Asia Treatment and Evidence (2022-2027)

NAMASTE is a community-based programme implemented across four sites in India, Nepal, and Sri Lanka, with the objective of establishing an effective detection-to-care pathway for young children with neurodevelopmental delays or disabilities. NAMASTE focuses on the early identification of children and their timely linkage to appropriate care and support services through strengthened community systems. In India, the programme is currently being implemented in North Goa and the East District of Delhi.

Over the past year, More than 1,000 system level frontline workers in Delhi and Goa have been trained on detection tools, leading to the screening of around 12,000 children, with interventions initiated at both sites. In addition, North Goa hosted the NAMASTE International Meet, bringing together teams from all four implementation sites and the University of Manchester to review programme progress and chart the future course of action.

KEY FEATURES

- Training to Anganwadi Workers to administer two screening questionnaires to identify neurodevelopmental disabilities in children aged 1.5-9 years in Delhi and Goa
- Training to non-specialists to deliver the WHO-Caregiver Skills Training and PASS Plus interventions to families where NDDs are identified
- Multimedia aids to enable caregivers to identify delays early and support them as they navigate care



Training of workers on the use of Child Development Milestone Calendar

FUNDER: Infosys Foundation & HCLFoundation



HCLTech Grant
India | by HCLFoundation

COLLABORATORS:

National Health Mission, Madhya Pradesh
Department of Women & Child Development, Madhya Pradesh



SAHARA team during a workshop in Bhopal

SAHARA

Supporting All mothers And children universAlly (2024-2028)

SAHARA is an integrated intervention that addresses maternal mental health through the Thinking Healthy Programme Plus (THPP) and early childhood development through the Lalan Palan component. The intervention adopts a task-sharing model to bridge gaps in mental health care delivery and strengthen the reach and quality of promotive messages for early childhood development. The Lalan Palan component focuses on building the capacities of caregivers of children aged 0–3 years in responsive caregiving and in providing age-appropriate early learning opportunities. It leverages existing ICDS systems by training Anganwadi Workers to deliver contextual, age-specific, video-based messages to caregivers during home visits and at Anganwadi Centres, using a facilitated video-viewing approach

KEY FEATURES

- Universal maternal mental health awareness session to all pregnant women and mothers
- Early Childhood Development: Video-based intervention for caregivers of children under three, delivered by Anganwadi workers
- Thinking Healthy Program Peer – delivered (THPP): ASHAs screen and provide 8 counseling sessions for those identified with perinatal depression



AWW conducting a Lalan Palan Baithak with caregivers

Moments of Pride



Dr. Gauri Divan was honoured with the Asia-Pacific Autism Award 2025 in Australia in recognition of her outstanding contributions to advancing autism research, strengthening community-based care models, and promoting accessible, scalable interventions for children with autism and their families across low-resource and diverse settings.

Dr. Gauri Divan has been conferred an Honorary Professorship by the University of Manchester, in recognition of her long association with the University in the area of autism research and leadership in the field

Anushree Pednekar and S. Varuni have received the Sangath Intramural Grant for C.A.R.E: Creating Awareness and Resources for Education of Caregivers of Children with NDDs. The grant will support the development of short, multilingual (Hindi and Marathi), culturally relevant video resources for caregivers of children with neurodevelopmental delays and disabilities.



R. Roy has enrolled in a PhD programme at the University of Manchester, researching how performance-based incentives –both monetary and non-monetary–influence the motivation and performance of community health workers in the early screening of neurodevelopmental disabilities in New Delhi, India.

Academic Milestones



An article based on Divya Gosain's PhD research was featured in Autism@Manchester magazine, showcasing the CDGs' impactful work in supporting caregivers' wellbeing and in training non-specialist workers through a task-sharing approach.

Additionally, Divya was featured in an interview published in the special edition newsletter of the Faculty of Biology, Medicine and Health, University of Manchester. The interview highlights the strong co-production focus of her research and its innovative use of an Acceptance and Commitment Therapy-based intervention to support the emotional wellbeing of caregivers of children with autism.

An interview featuring Abhipreet Kaur was published in Autism@Manchester magazine, highlighting CDG's work in bringing attention to the challenges faced by caregivers of children with autism in India during the pandemic. The feature also explored her PhD within the NAMASTE programme, which evaluates a community-based detection pathway for young children with neurodevelopmental differences in Delhi, led by trained non-specialist health workers.



Prabhleen has successfully completed the course titled Fundamentals of Implementation Science, offered by the University of Washington's Global Health E-learning Program. The course duration was 11 weeks.

Scan the QR codes to read the papers



An Inclusive Approach to Supporting Caregivers of Autistic Children- Divya



Supporting Caregivers of Autistic children in India- Divya



Research across the seas. Interview with Abhipreet Kaur

Conference Presentations



- **April-May:** At the INSAR Annual Meeting in Seattle, USA, **Dr. Gauri Divan** participated in an in-person session on building global capacity for early autism intervention and delivered an oral presentation on the COMPASS Trial evaluating the PASS Plus intervention for young children with autism in New Delhi. **Abhipreet Kaur** presented posters on Globalizing the BOSCC and on parental diagnostic experiences in low- and middle-income countries. While, **Sweta Pal** presented poster on evaluation of a community engagement toolkit in India, and **Bhavya Malhotra** on community engagement with individuals with lived experience of autism and intellectual disability. At INSAR, **Aanchal Chopra** presented a poster on non-specialist workers' experiences delivering parent-mediated autism interventions in urban India, **Diksha Gajria** presented a poster on the acceptability and feasibility of a community-delivered digital neurodevelopmental profiling tool, and **Mahima** presented findings on the feasibility of non-specialist health workers delivering social communication interventions in community settings in New Delhi.
- **May:** At Society for Research in Child Development Conference, Minneapolis, USA, **Dr. Supriya Bhavnani** presented posters on 'Nutritional, psychosocial and environmental determinants of neurodevelopment and child mental health: The COINCIDE study', and 'Acceptability and Feasibility of a Community-Delivered, Digital Tool for Neurodevelopmental Profiling'. **Smita Todkar** presented abstracts on the SPRING birth cohort and the COINCIDE study at TIFR, Hyderabad, India. Smita Todkar also presented work on father-child relationships across diverse settings at the University G. D'Annunzio of Chieti, Italy.
- **June:** **Dr. Supriya** also delivered oral presentation on STREAM at EACD-IAACD in Heidelberg, Germany and at Nottingham Trent University, UK. At the International Congress on Evidence-Based Parental Support (I-CEPS), a virtual conference, **Abhipreet Kaur** delivered an oral presentation on family perspectives of non-specialist screening for neurodevelopmental disorders. **Harshita Yadav** and **Mrinmoy Ghosh** presented findings on parental migration and grandparent caregiving in the Bhil Indigenous community. While, **Divya Gosain** presented a systemic review on strengthening caregiver's wellbeing for children with neurodevelopmental disorders in LMICs. **Smita Todkar** also presented findings of her PhD work at I-CEPS.
- **September:** **Dr. Gauri Divan** was an invited speaker for the pre-conference workshop on Autism at the 17th Asian Oceanian Congress of Child Neurology on scalable autism interventions in low resource settings and harnessing community partnerships for early autism support.

Conference Presentations



Bhavya Malhotra, Abhipreet Kaur, Asiri Hewamalage, Gauri Divan, Kathy Leadbitter & Erica Salomone at INSAR



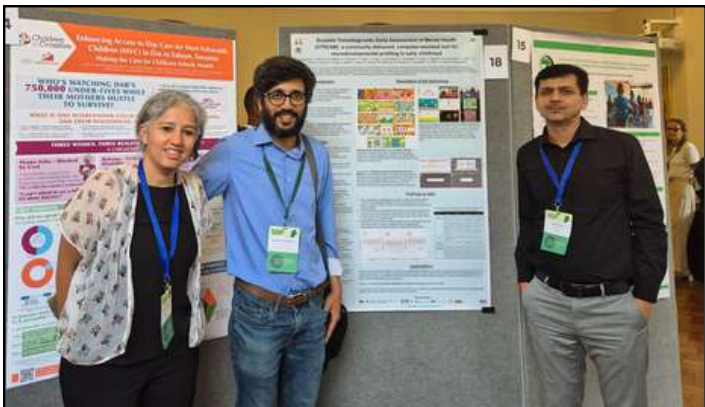
Dr. Gauri Divan with fellow panel members at INSAR



Ashrita Nagpal & Gauri Divan, presenting collaborating work done by Perelman University and Sangath at INSAR



PhD scholar Smita Todkar participated in the T. T. Narasimhan School of Advanced Studies at IPH Bengaluru



Supriya Bhavnani presenting poster at TSC, London



Alok Ranjan delivering an oral presentation at TSC, London

Publications



Bhavnani, S., Ranjan, A., Mukherjee, D., Divan, G., Prakash, A., Yadav, A., ... & McCray, G. (2025). A non-specialist worker delivered digital assessment of cognitive development (DEEP) in young children: a longitudinal validation study in rural India. *PLOS Digital Health*, 4(5), e0000824.

Kumar, D., Soremekun, S., Roy, R., Verma, D., Bhopal, S., Sharma, K. K., ... & Avan, B. I. (2025). Impact of SPRING, an Integrated Mother-Child Focused Psychosocial Home-visiting Intervention, on Postpartum Depression in Rural India: A Cluster Randomized Controlled Trial. *Indian Journal of Psychological Medicine*, 02537176251370961.

LaPoint, S., Klein, C. B., Sandbank, M., Bottema-Beutel, K., Fletcher-Watson, S., Divan, G., ... & Green, J. (2025). Maximizing the Quality and Reporting Standards of Autism Intervention Science. *Autism research*, 18(11), 2166-2173.

Nagpal, A., Chopra, A., Chan, J., Pellecchia, M., & Divan, G. (2025). Implementing an Evidence-Informed Teaching Approach for Autistic Students in Bengaluru, India. *Journal of Autism and Developmental Disorders*, 1-12.

Pal, S., Malhotra, B., Gonsalves, F. D., Mutaher, A., Hansamalee, C., Bajracharya, S., ... & NAMASTE Consortium. (2025). Co-designing a community engagement toolkit to raise awareness of screening and care for neurodevelopmental delays and disabilities in India, Nepal, and Sri Lanka. *Mental Health & Prevention*, 38, 200431.

Parameshwaran, D., Bhavnani, S., Mukherjee, D., Sharma, K. K., Newson, J. J., Subramaniam, N. P., & Thiagarajan, T. C. (2025). Resting state EEG classifies developmental status in three-year-old children. *Developmental Cognitive Neuroscience*, 74, 101575.

TODKAR, S., Srinivas, P. N., Patel, V., & Bhavnani, S. (2025). Examining characteristics of father-child relationship among diverse settings: A qualitative scoping review protocol. *Wellcome Open Research*, 10, 124.

Wechsler, D. L., Mandy, W., Lai, M. C., Boyd, B., Goodwin, M. S., Divan, G., & Leno, V. C. (2025). Advancing health-care equity for autistic people: Mental health as a key priority. *The Lancet*, 405(10491), 1723-1726.

Voices of CDG



Anuradha Jha
Community Facilitator

“ I’m Anuradha Jha, and I joined the COMPASS Project in June 2025 as a Community Facilitator. The project provided me with valuable field exposure, allowing me to work closely with children and engage directly with parents. Through regular field visits, I developed strong communication and interpersonal skills while gaining a deeper understanding of community realities. Working with Sangath also enabled me to continue my studies alongside fieldwork, helping me balance academic learning with practical experience. Overall, my journey with the COMPASS Project has been enriching and instrumental in my personal and professional growth.

“ Completing four years at Sangath has been a profoundly enriching and transformative journey, shaping me both professionally and personally. Being part of the COINCIDE project has offered a stimulating and supportive environment that has consistently fostered my growth as a researcher and PhD scholar. I am deeply grateful to Dr. Supriya Bhavnani, Dr. Gauri Divan, and Prof. Vikram Patel for their guidance, thoughtful feedback, and encouragement, which have honed my research skills and inspired critical and ethical thinking. I am equally thankful to my colleagues at Sangath for their collaboration, shared learning, and dependable support whenever needed. Sangath’s ethos of keeping the lamp of learning alight resonates deeply with me; it is a space that fuels learning, growth, and the continual striving for excellence.



Smita Todkar
Senior Research Associate



Suman Rani
Community Facilitator

“ I am Suman Rani, a Community Facilitator at Sangath, and I have been associated with the organization for over five years. During this time, I have delivered the PASS Plus intervention under the COMPASS project and am currently facilitating the WHO Caregiver Skills Training (CST) under the NAMASTE project. Working at Sangath has been a truly life-changing experience. I have learned deeply about neurodevelopmental disabilities, especially autism. What I cherish most is the lasting impact I have created in the lives of caregivers and children. Many parents continue to remember us, remain connected with us, and express deep gratitude for the support they received. They often share their hope that this connection with Sangath continues in the future.

“ Detection Team (Namaste & COMPASS_LF) I am Yogesh Kumar, a Research Associate with the Detection Team under the NAMASTE and COMPASS_LF projects. My responsibilities include verifying screening data and preparing detailed case notes based on assessments conducted by Anganwadi Workers (AWWs). I also coordinate with COMPASS families for longitudinal follow-up. Additionally, I work as a DCMA Coder interpretation of communication patterns in children with autism and other neurodevelopmental conditions, in collaboration with their parents. I am proud to contribute to this impactful initiative and to make a meaningful difference in the lives of autistic individuals and their families.



Yogesh Kumar
Research Associate



Prachi Khandeparkar
Psychologist

“As a member of this team, I am truly honoured to work alongside a group of passionate professionals. The dedication shown daily—taking time to patiently mentor a family and helping a child strive is what makes this group special. Watching our team provide consistent, responsive care has created a secure, nurturing environment where we’ve seen children and families not just cope, but truly flourish. We are laying a strong foundation for the future, and I am confident that our work is creating lasting, positive change in the lives of these children and their families for now and years to come. I have personally learnt a lot from each member of the team.

“My time with Sangath has been incredible. Over the past five years, I gained valuable insights into data management and data collection challenges, which strengthened my problem-solving skills. When I joined, I lacked confidence in workplace communication, but Sangath helped me grow more confident both professionally and personally. I am grateful for the learning, support, and opportunities that supported my growth.



Govind Kumar
Senior Data Analyst



Harshita Yadav
ECD Project coordinator

“Hi, I am Harshita and I work under the SAHARA project, within the Lalan Palan wing as an ECD project coordinator, where my work sits at the intersection of science, community realities, and caregiving practices. Through field visits, observations, and close engagement with Anganwadi workers and supervisors, I try to understand how families care for young children in their everyday lives and what support truly helps them. My role involves shaping and adapting child development content, using video-based and facilitation materials, so that ideas like responsive caregiving, early learning, and nurturing care feel simple, practical, and culturally meaningful. I enjoy translating evidence into stories and messages that resonate on the ground, while also strengthening supervision systems so frontline workers feel confident and supported. What drives my work is the belief that small, sensitive interactions in early childhood can quietly shape lifelong outcomes.

“Working in the COMPASS project allowed me to improve my skills in learning interventions and apply them in practical settings. Through my interactions with parents, I gained a deeper understanding of their challenges and observed how the intervention process helped them build confidence in engaging with their children. This experience also helped me expand my skill set by providing training and supervision to NSP staff. It was a pleasure to collaborate with such a diverse team, and I thoroughly enjoyed being part of this project.



Mahima
Programme Coordinator



Nupur Colmencar
Data Entry Officer

“Working with SANGATH on the NAMASTE project has been an enriching experience, providing valuable insights into child development, autism, and data management. As part of this initiative, we trained Anganwadi workers to enhance their understanding of child development & identifying autism signs. One of the most challenging yet rewarding aspects was training the Anganwadi workers to use the mobile REDCap app for screening purposes, given their limited familiarity with mobile technology. However, overcoming this hurdle has been a gratifying experience, as it directly contributes to empowering them to identify and support children with developmental challenges effectively. I find great fulfillment in this work, knowing that our efforts will contribute to supporting children and making a positive impact on their lives.



Raghuvveer Singh
Senior Admin. Manager

“ I began my journey with Sangath in 2015 with the SPRING project, working across Rewari (Haryana) and the South Delhi office that later helped shape the Delhi Hub as it stands today. Over the years, as part of the CDG, I have had the opportunity to work on multiple projects including SPRING, START, EIRA, BRAINTOOLS, COMPASS, NAMASTE and now the COMPASS Longitudinal Follow-Up. This journey has been one of continuous learning and growth. Sangath is not just a workplace; it feels like a family where we grow together. While my core role has been in Admin, Finance and HR, I have also closely worked with Research and Intervention teams, learning from inspiring leaders at Sangath and engaging meaningfully with our funders. I am grateful for the trust, exposure and values Sangath has given me over the years the bond that started in 2015 continues to grow stronger.

“ I am working as a Research Associate in the CEI team with the NAMASTE and COMPASS_LF projects, with a primary focus on community and family engagement. My role involves leading data collection at Anganwadi centres and with families, managing and compiling data on the REDCap platform, and conducting awareness sessions on child development. I also support monitoring the distribution and utilisation of CEI materials, coordinate closely with Anganwadi Workers, and contribute to project documentation such as reports and newsletters. As part of the COMPASS_LF project, I ensure continued engagement with families by coordinating longitudinal follow-ups and supporting their active participation in the intervention process.



Mithun Kumar
Research Associate



Neeta Bisht
Community Facilitator

“ I am Neeta Bisht and have been associated with Sangath since 2019. I began my journey as a counsellor under the COMPASS project, delivering field-based interventions to families. Since 2024, I have been working as a Community Facilitator under the NAMASTE project. Through this work, my understanding and sensitivity towards supporting children with special needs and their families have grown significantly. Working at Sangath has been a life-changing experience, and the greatest satisfaction comes from knowing that my work has brought positive change to the lives of children and their caregivers.

“ Working with NAMASTE as a Senior Intervention Facilitator for the WHO-CST intervention over the past two years has been an extremely fulfilling experience. This journey has supported my growth both personally and professionally, and I am grateful for the consistent guidance and support from my seniors. Being part of a process that creates lasting change for caregivers of children with neurodevelopmental delays has been deeply rewarding. Seeing caregivers gain confidence, receiving their gratitude, and working with colleagues who have become friends has been truly motivating. I am thankful to this team for the opportunities that have strengthened my learning and growth.



Anushree Pednekar
Senior Intervention
Facilitator



Kama Jayant
Community Facilitator

“ I have been working with Sangath since 2018, starting as a researcher on the PRIDE project and later delivering the COMPASS Plus intervention. I am currently a Community Facilitator under the NAMASTE project, facilitating the WHO Caregiver Skills Training (CST). Over the years, this work has strengthened my understanding of neurodevelopmental disabilities and supported my personal and professional growth. I have also developed strong digital skills, including Word, Excel, and email. The most rewarding part of my journey has been building lasting relationships with families, whose continued trust and gratitude remind me of the meaningful impact of this work.

Our Operational Pillars

Heartfelt thanks to our Admin./HR/Finance team—the true backbone of our growth and success. Your unwavering support makes all the difference.



RAGHUVVEER SINGH
SENIOR MANAGER HR & ADMIN
(NAMASTE & COMPASS LF)



HIMANSHU GUPTA
FINANCE MANAGER (NAMASTE)



AVINASH GAUTAM
IT MANAGER & COMMUNICATION
(NAMASTE)



LUIZA LOBO
SENIOR ADMIN OFFICER
(NAMASTE)



PRAKASH PENDAKAR
SENIOR ADMIN OFFICER
(SAHARA)



RINKU YADAV
ADMIN & FINANCE OFFICER
(STEER AND COINCIDE)



PREETI DABALE
JUNIOR ADMIN OFFICER
(NAMASTE)



AAYUSH
PROJECT SECRETARY
(SAHARA)



RAHUL SAWANT
SENIOR ACCOUNTS OFFICER
(NAMASTE)



BITTOO KUMAR
SENIOR ADMIN & FINANCE
OFFICER (STEER)



SARVESH
FINANCE COORDINATOR
(SAHARA)

Glimpses of NAMASTE International Meet-2025, Goa



Community Connections and Activities



World Autism Awareness Programme conducted in partnership with the DWCD officials and personnels, East district, Delhi



Lectures on Child Development by R. Roy and Sweta Pal to students of O.P. Jindal Global University, Sonipat



Community Awareness program during Poshan maah at Anganwadi centre, Delhi



Students of O.P. Jindal Global University at Namaste Sangath office.



Anup Netravalkar on the India Autism Center Podcast, reflecting on Sangath's journey in autism and NAMASTE



Sweta Pal as a guest in NIHR podcast series- Spotlight on community engagement and involvement (CEI): Leaving no one behind.

Acknowledgments

This newsletter is created & designed by:

Somil Rastogi
Mithun Kumar
Shikha Saini

The editorial team includes:

Gauri Divan
R. Roy
Supriya Bhavnani
Sweta Pal



451, Bhatkar Waddo, Succor, Bardez, Goa 403501



E-334, UGF, East of Kailash, New Delhi -110065



**Plot No. 106, Good Shepherd Colony, Danish Kunj,
Kolar Rd, Bhopal, Gehun Kheda, Madhya Pradesh
462042**



contact_cdg.sangath@sangath.in



www.sangath.in